



# **MANISA CELAL BAYAR UNIVERSITY**

## **GUIDE FOR INCOMINGS**

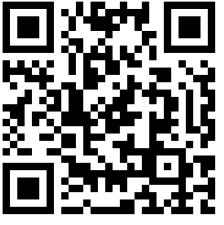


# Transport From İzmir to Manisa

The closest airport is in İzmir, Adnan Menderes Airport. The distance between the two cities, İzmir and Manisa, is only 35 km.

## By Bus and Manisa Seyahat

You can buy “İzmir KENTKART” and fill in some credit in it so you can take bus number 204. With bus **Number 204**, you can go to the **İzmir Intercity Bus Terminal**. On the second floor of the terminal, you can find ‘**Manisa Seyahat**’. This bus charges you a fee from İzmir to Manisa and you pay it on the bus. Please scan the QR code for the timetable of bus number 204. Then you can find the bus timetable by searching for the number 204 on the page that opens.



SCAN ME



# ✈️ Transport From Airport

## İZBAN Subway

You can take İZBAN\*\* (İzmir BanliyöTreni / İzmir Suburb Train) from Adnan Menderes Airport to Aliağa Direction, then you get off at Hilal station where you transfer to İzmir Metro, please take the line Evka-3 that will take you to Bornova.



## İZBAN Subway

\*There is something to be mentioned at this point. When you get on the train called Izban, you have to buy İzmir Kent Kart. You have to load money in order to use İZBAN (you can buy it from there and charge your İzmir Kart from the entrance of Izban).



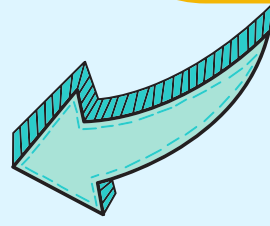
## İZBAN Subway

\*Izban has a system that takes deposits from your İzmir Kent Kart and it charges the distance you go. So, when you get off from İZBAN at Hilal Station you need to put your card on to the orange devices (you will see people putting their cards on that device to take their deposit back) to take your deposit back into your card.



# How do the İZBAN Subway and İzmir Kent Kart look?

**İZBAN**



**İzmir Kent  
Kart**





# Transport From Airport

You will need İzmir Kent Kart (Whenever you travel to İzmir you will need this card, we recommend you buy it.

\*\* Working hours of İZBAN from the Airport to Alsancak are between 05.16 am and 00.52 am.

For working hours of Metro please scan the QR code below.



SCAN ME

From Bornova Manisa Kavşağı, you should get on Manisa Seyahat.

\*Manisa Seyahat working hours;

- From Manisa to İzmir 05.30 am-22.15 pm (per 15 minutes)
- From İzmir to Manisa 06.20 a.m-23.15 pm (per 15 minutes)

Hours of İZBAN from the Airport to Alsancak are between 05.16 am and 00.52 am.





# Transport Between Manisa City Center and Muradiye Campus (Main Campus)



## Bus Number 21

Transportation between Manisa and Muradiye Campus is with Bus Number 21.



## Manisa Kart (Transportation Card)

You need Manisa Kart (Card) to use buses in Manisa. You can buy Manisa Kart (Card) from some kiosks and markets. There are a few markets in Manisa Intercity Bus Terminal and you can find Manisa Kart (Card) in those markets.



## Load money on the card

Manisa Kart (Card) is like İzmir Kent Kart. You need to fill in the card with money to be able to use it.





# Hotels in Manisa



## Anemon Hotel



SCAN ME



## Arma Hotel



SCAN ME





# Hotels in Manisa



## Giritligil Hotel



SCAN ME



## Saruhan Hotel



SCAN ME







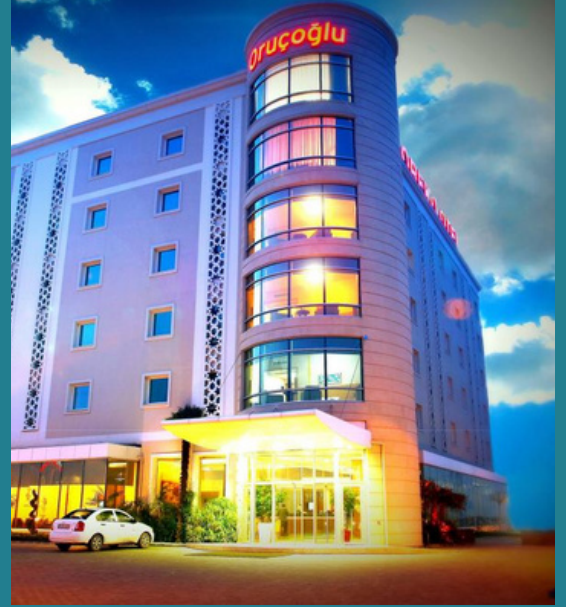
# Hotels in Manisa



## Oruçoğlu Hotel



SCAN ME



## Spilos Hotel



SCAN ME





# Search Engines For More Hotels in Manisa



**odamax.com**



 **SCAN ME**

**trivago.com**



 **SCAN ME**

**hotels.com**



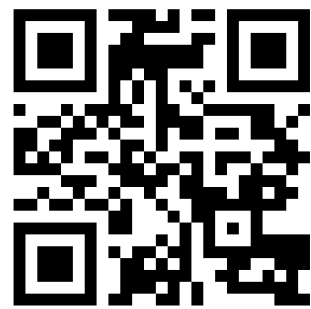
 **SCAN ME**

**otelz.com**



 **SCAN ME**

**airbnb.com**



 **SCAN ME**



# For Students

## Private Dormitories for Women

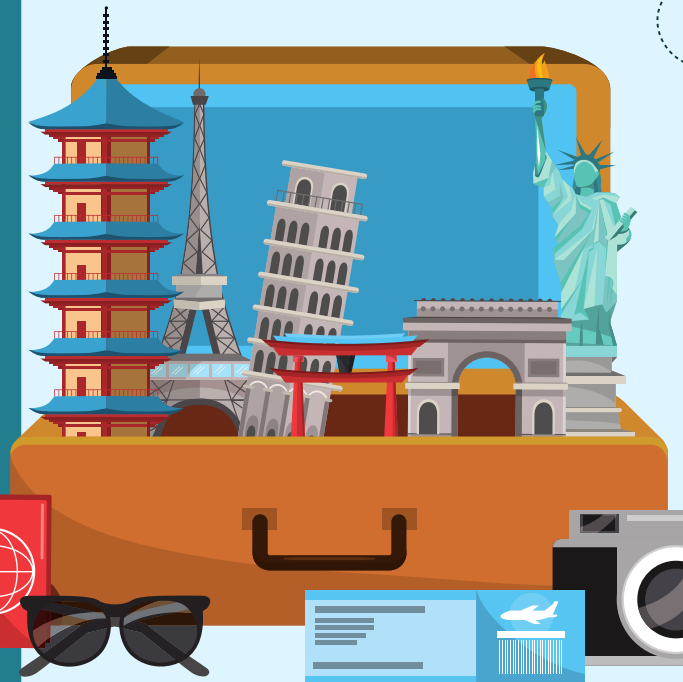
You can click on the name of the dormitory to access its web page;

- [Akasya Dorm](#)
- [Atabey Dorm](#)
- [Durukan Dorm](#)
- [Ilgın Dorm](#)

## Private Dormitories for Men

You can click on the name of the dormitory to access its web page;

- [Akasya Residence](#)





# International Relations Office

## Rectorate Building

This is the first place you should visit when you come in order to start your studying process.

First things first! Go to Erasmus Office in Rectorate Building, in Muradiye Campus. We are waiting for you.





# General Information



## Useful Websites

To see all bus routes of Manisa: [Click HERE!](#)

To see the list of night-pharmacies of Manisa: [Click HERE!](#)



## Useful Travel Guide Links for Turkey

Click on the name of the website to access its web page;

- [Lonely Planet](#)
- [Turkey Travel Guide](#)



## Emergency Phones

Emergency Service: 112

Police: 112

Fire Station: 110

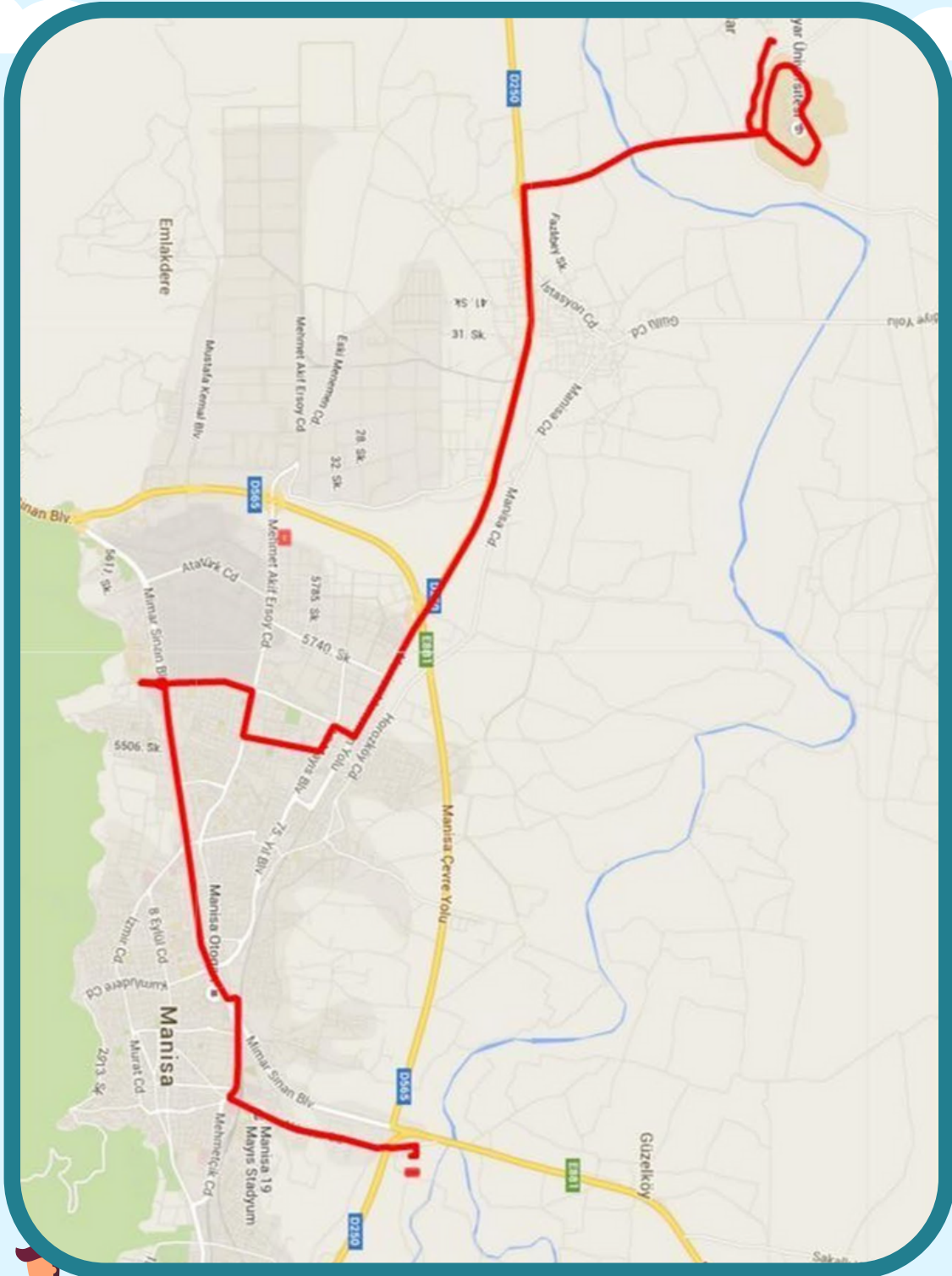
Electrical Breakdown Service: 186

Gas Breakdown Service: 187





# Route of Bus 21 From Campus to Manisa (or vice versa)







# Volunteer Team



Our volunteer team will be your Erasmus friends during your stay in Manisa!



# Where you can go in Muradiye Campus (Main Campus)?



## Cey Park AVM

This is the only mall on campus where you can sit and drink or eat something. Pappollo, Brew Mood, Starbucks, Gıybet, Macaroni, and Picasso Pizza are the restaurants and coffee shops in the CeyPark where you can hang out with your friends.

## Cey Park AVM

There are also cafeterias in the faculties. Our students can benefit from the student cafeteria.





# Where you can go in Uncubozköy Campus?



## Çamlıca Cafe

If you want to drink something in silence you can choose this cafe.



## Boheme Jardin

If you want to drink or eat some frenchie thing in an elite atmosphere you can prefer here.



## Mia Cafe

For soft drinks and snacks you can prefer this cozy cafe.







# Where you can go in the city center?



## Taş Fabrika

The visuality of this cafe may attract you as much as its dishes and drinks. You can listen to live music on some days of the week.



## Pink Bloom

With delicious desserts and fabulous pink atmosphere this place is the best choice in Manisa city center.



## Güney Kebap Salonu

In this place you can taste traditional Turkish foods and also Manisa's famous Kebap.



# Where you can go around in the city center?

## Han Cafe

This place has some cafes and you can sit exactly in the history. You can find tea, and coffee here. This cafe is so close to "8" Square.



## Şifahane

This place used to be a hospital. Now it's a medical history museum. It has lots of wax dummies to exhibit the history of medicines, etc.







# You can spend more time in these places!



## Magnesia AVM

This is the only mall in Manisa. There is a big cinema theatre in it. There are many stores for shopping and different restaurants for every taste. Also, you can find a techno market and a bookstore here.



## Kentpark

This is the biggest park in Manisa. We suggest you see this park. If you want to walk by green you can go there. It has cafes and children's playgrounds. You can do bicycling; play tennis, basketball or volleyball on the courts in this park. You can go there by bus with numbers 3, 11 and 21.



## Masal Park (Fairy Tale Park)

In the park, you can see the miniatures of important buildings and fairy tale heroes.





# Contact us

## Erasmus Volunteer Network (E.V.N.)

### Head of E.V.N.

Ms. Zeynep HAMURCU

cbuesn@gmail.com (for incoming students)

### Manisa Celal Bayar University – Erasmus Office

erasmus@cbu.edu.tr (for incoming staff and general information)



SCAN ME



**We are pleased to welcome you!**

**HOPE YOU ENJOY YOUR STAY  
IN MANİSA!**

